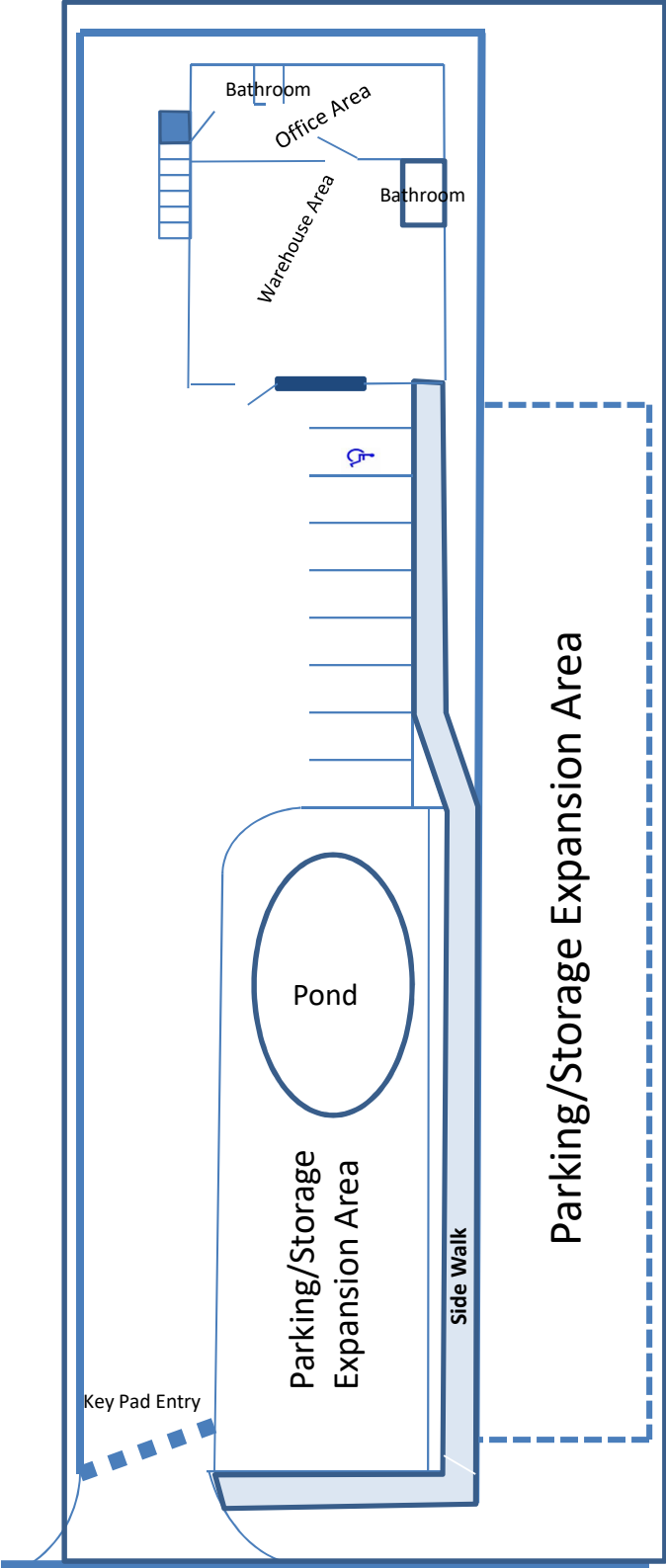
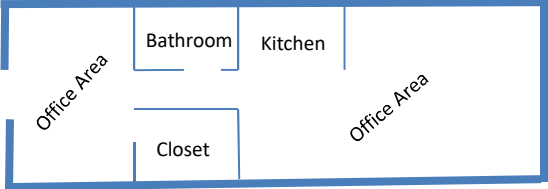


214 West Powell Lane



Convenient North Central Location



Second Floor

- 17,521 Square Feet of Land
- CS Zoning
- 1,721 Square Feet of Warehouse
- 930 Sq. Ft. Office on 1st Floor
- 930 Sq. Ft. Office on 2nd Floor
- Ideal For Two Related Companies
- Secure/Electric Gated Entry
- Grade-Level Overhead Door

Ideal For Service or Manufacturing

Contact:

Joseph Hoover/Owner-Agent
512.457.9925

Email: hoover@josephhoover.com

West Powell Lane

THE INFORMATION GUARANTEES, WARRANTIES OR REPRESENTATION AS TO THE COMPLETENESS OR ACCURACY THEREOF. THE PRESENTATION OF THIS PROPERTY IS SUBMITTED SUBJECT TO N CONTAINED HEREIN WAS OBTAINED FROM SOURCES BELIEVED RELIABLE; HOWEVER, JOSEPH HOOVER COMPANY MAKE NO ERRORS, OMISSIONS, CHANGE OF PRICE, PRIOR SALE OR LEASE OR WITHDRAWAL WITHOUT NOTICE



214 West Powell Lane

